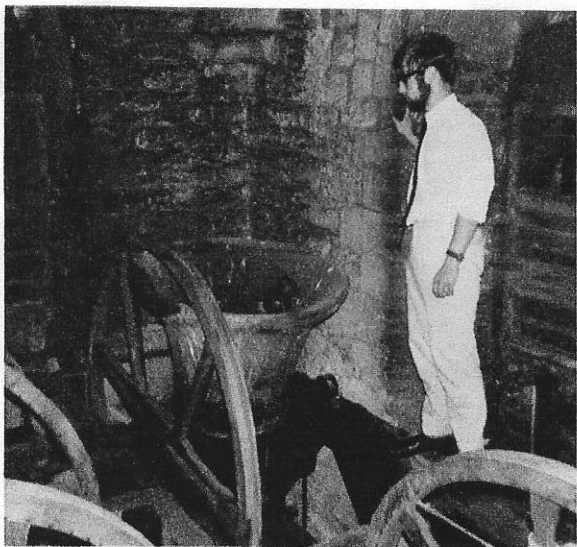


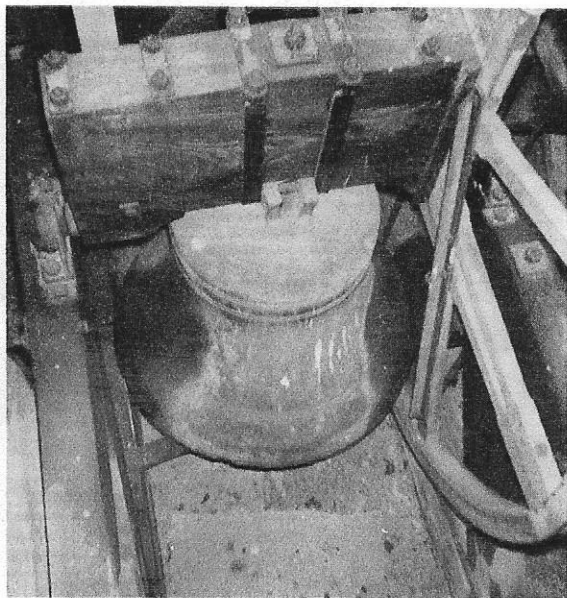
**THE BELLS OF  
ST. MARY'S CHURCH  
WHEATLEY**



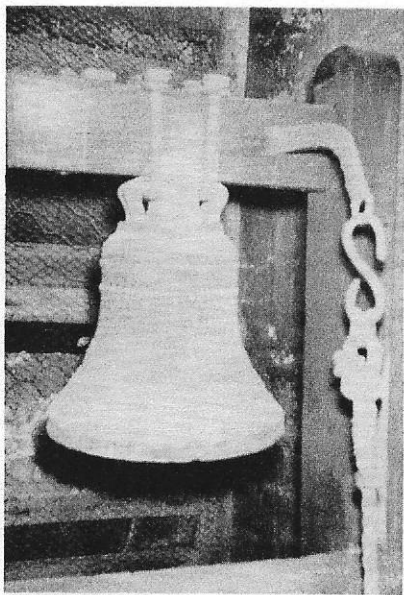
**TENOR BELL** inverted for ringing  
Cast by John Briant 1793



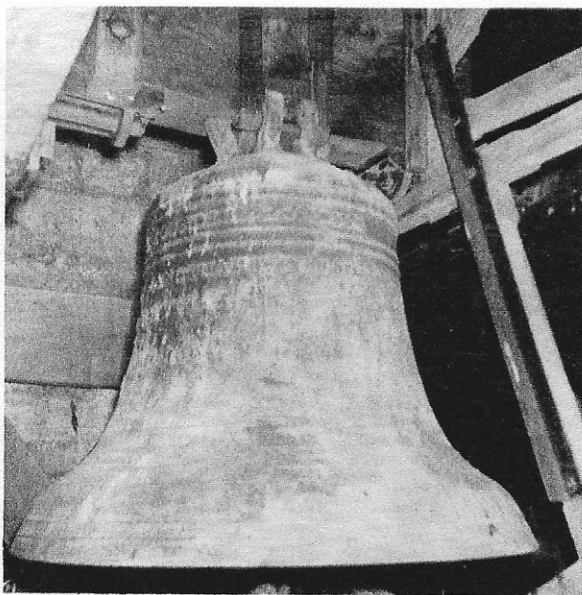
2nd, 3rd and 4th bells inverted for ringing



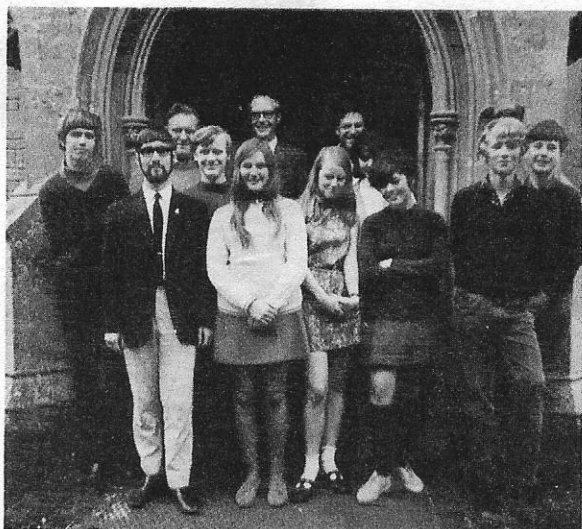
The Bell off which the church clock strikes



**THE RUSSIAN SANCTUS BELL**  
Presented to the church in 1921



**TREBLE BELL** by Mears and Stainbank 1879



Members of the Band who  
ring Wheatley bells for services