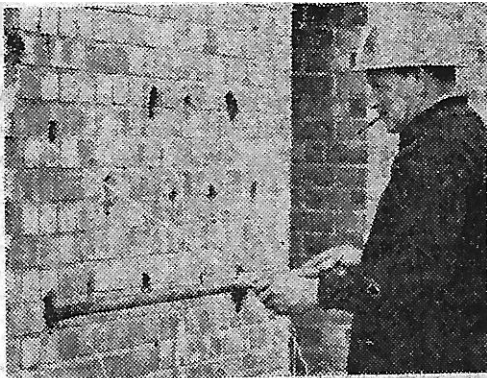
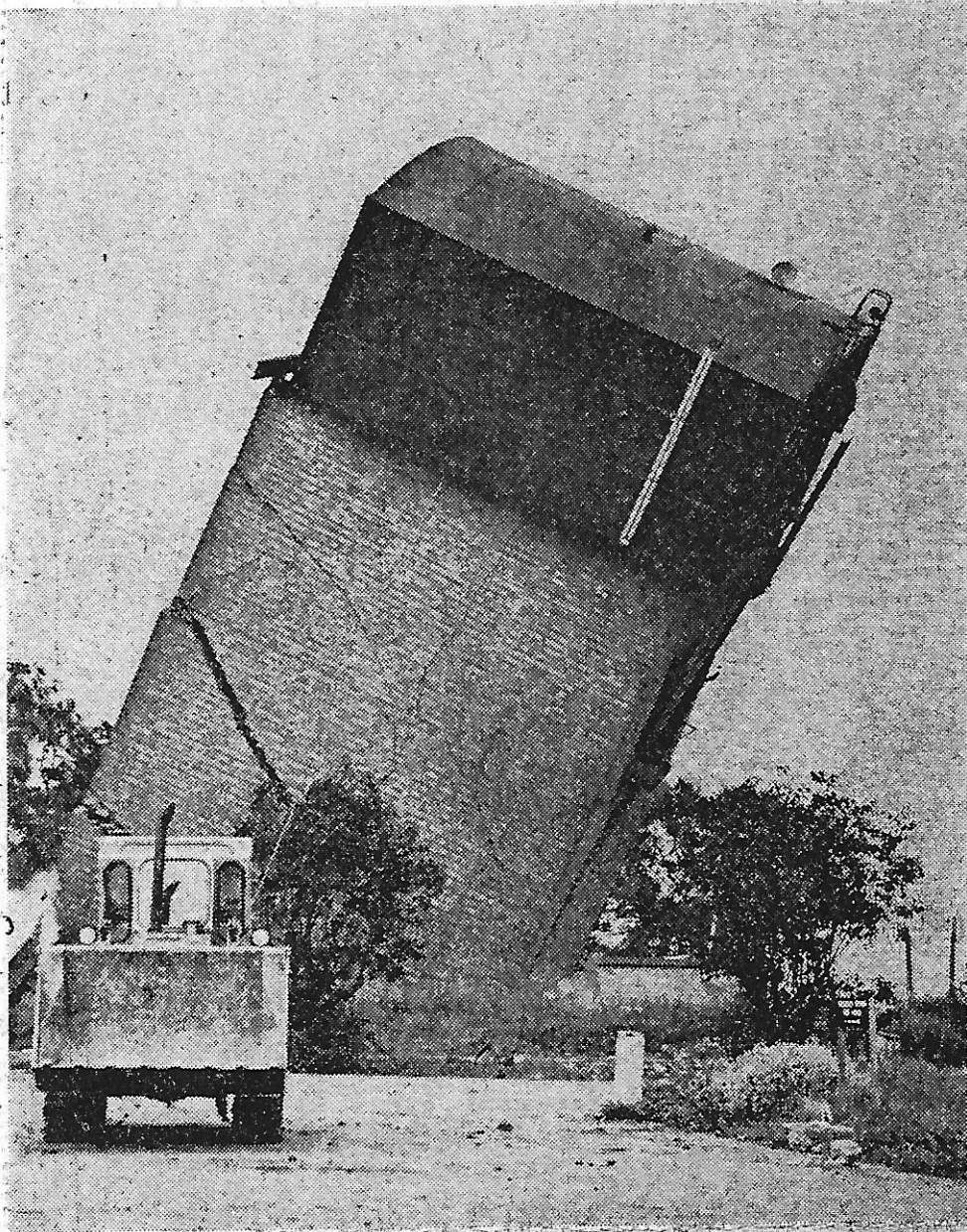


FOR TEN MINUTES
IT STOOD--AN
87ft. HIGH
LEANING TOWER
OF WHEATLEY, THEN



... down it came



One of the more unnerving moments in a press photographer's life, as he waits with finger tensed for that critical split second when the falling building is just in the right position for a "shot." Around him fly

lumps of brick big enough to give a nasty knock, thrown out by explosions of gelignite needed for the destruction.

These pictures were taken yesterday by I. D. Sansom at the old Wheatley Military Hospital when Mr. G. R. Nixey brought down an 87ft.

water tower with a 37-ton tank on top.

It took several nibbles around the bottom corners with 25 two-ounce charges and a final pull from a bulldozer before it fell after standing like the leaning tower in Pisa for ten minutes.