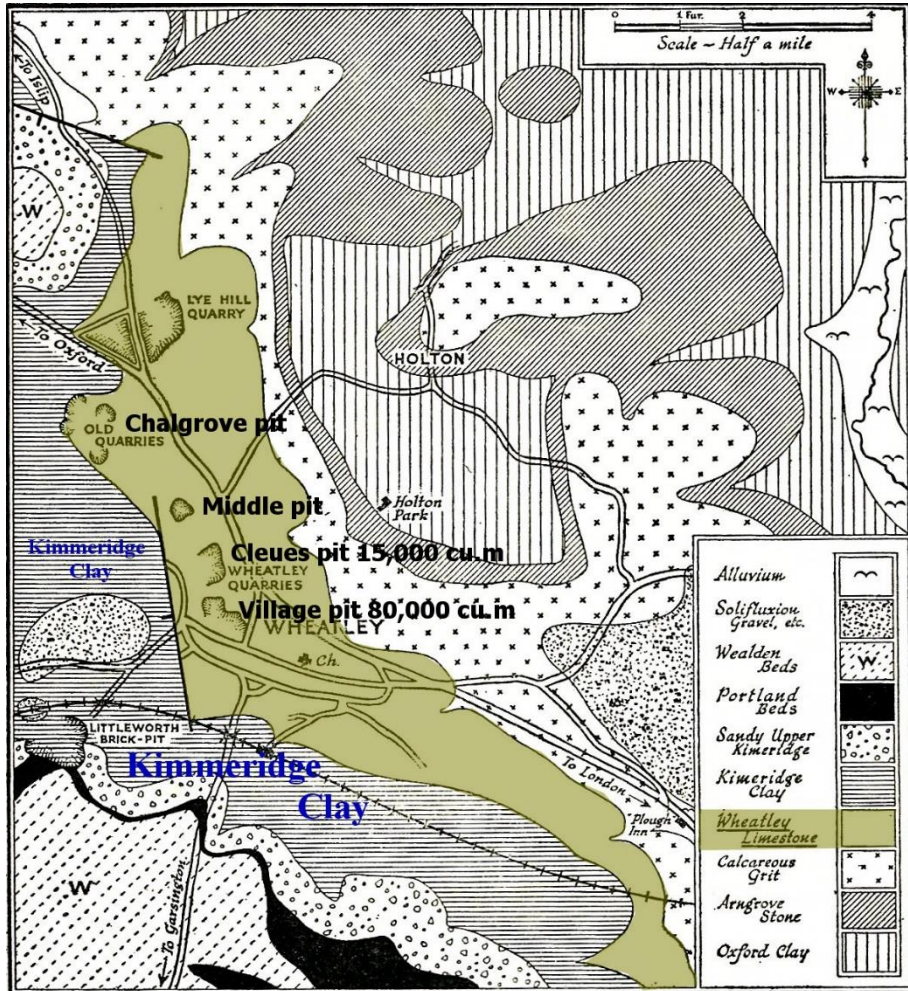


0677 Wheatley limestone chronological references

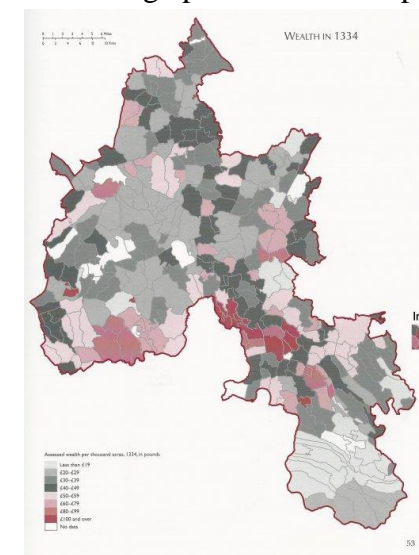
The quarry which produced the earliest and best stone at Wheatley during the fourteenth century was called “Chalgrove”. This was within the ‘Royal Forest’ so required the King’s permission to be quarried.



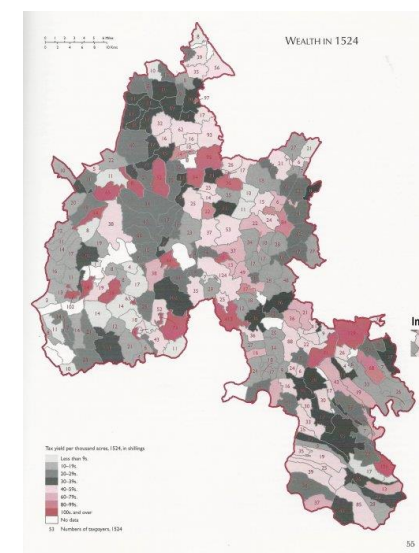
Chronological references to Wheatley stone

- 13C, Wheatley stone merchants such as Hugh Griffin and Nicholas and Thomas Prat identified as active within a ten mile radius of the quarry and their activity suggests that many of the landless tenants, recorded as living at Wheatley in 1280, may have earned their living.
- 1286, for the King's bridge over the Thame.
- 1278 and 1290, Merton College.
- 1303-4, for the Oxford Dominicans (100 sq. ft.).
- 1316, for the Augustinians (40 sq. ft.).
- 1334, Wheatley one of the ten wealthiest parishes/villages in the county
- 1344, for Windsor Castle (John Peggi of Wheatley supplied stone enough to fill 116 carts).
- 1353, for Wallingford Castle.
- William of Wvkeham was the greatest Windsor Castle executive concerned, succeeded in November 1361 by William of Mulsho, canon of Windsor, who held office till April 1365.
- 1362 William Cok of Wheatley & Nicholas Harald were described as masters & wardens of the quarry when they were empowered to take masons to dig and cut stones for Windsor Castle, transport it there by land and water.

1334 Village/parish wealth map



1524 Wealth map



- Between 1363 and 1365, Windsor Castle again (5718 ft. of Whatele stone bought from Nicholas Harald at 2½ d. a foot, £59.11.3, and 2598 ft. of stone bought from William Eustas for the said works at 2½ d. a foot, £27.1.3.).
- 1375-6, Cuddesdon church.
- 1378-9, Abingdon Abbey (by water from Sandford).
- 1378-9, Queen's College.
- 1382, Exeter College.
- 1383, Wallingford Castle again in 1395.
- 1396-1400, New College after being founded by William of Wvkeham in 1379.
- 1474, Magdalen College.
- 1525, Christ Church.
- 1524 Wealth map. Wheatley no longer a relatively wealthy parish/village