

Hourly Traffic Averages: Morning, 7 to 9am



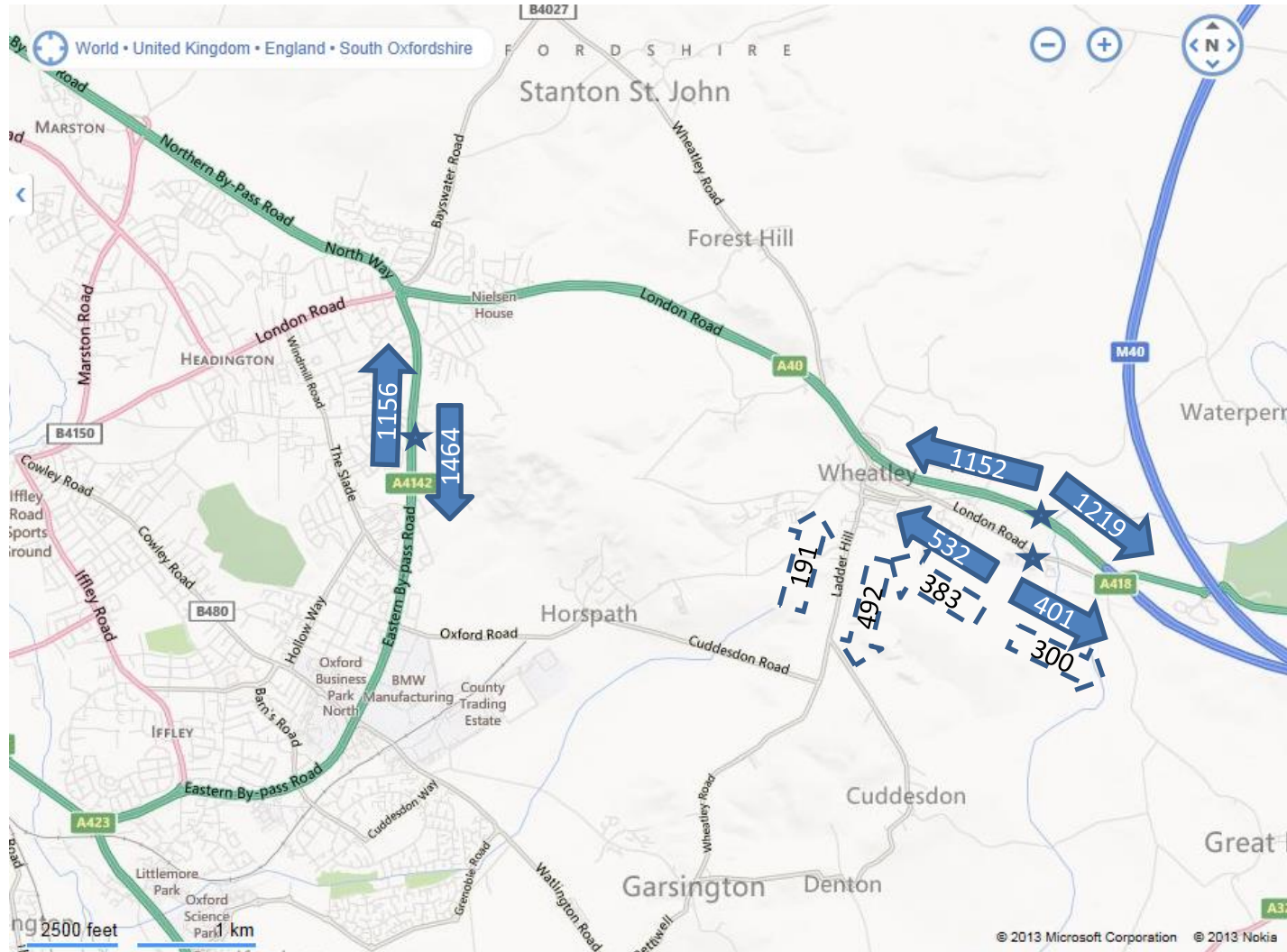
- Open arrows indicate derived figures; OxCC 2008 flows dotted
 - *figures probably under-estimated

Hourly Traffic Averages: Evening, 4 to 6pm



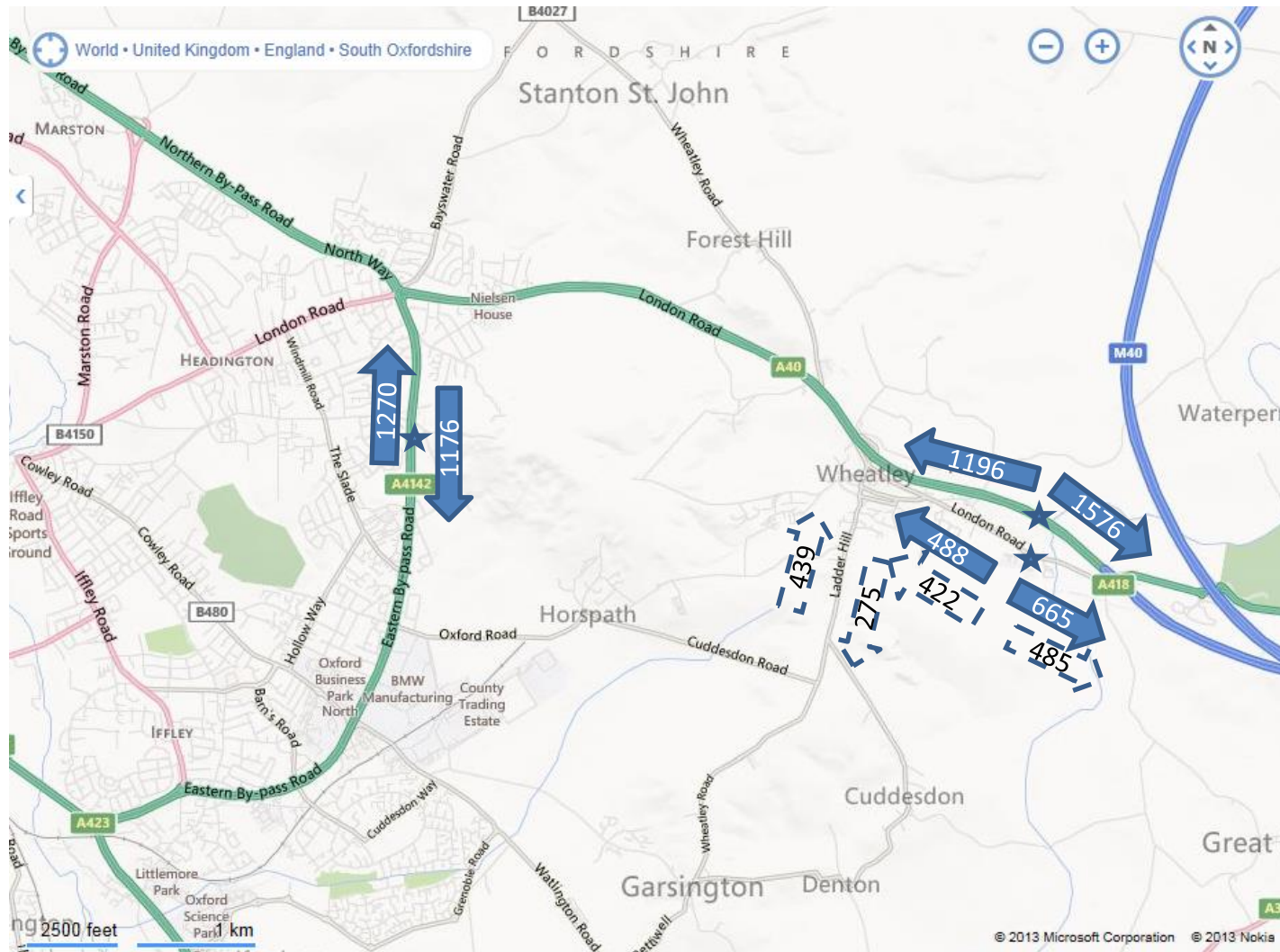
- Open arrows indicate derived figures; OxCC 2008 flows dotted

Hourly Traffic Averages – Wheatley Environs, 7 to 9am



- Oxford County Council figures 2013; open arrows 2008

Hourly Traffic Averages – Wheatley Environs , 4 to 6pm



- Oxford County Council figures 2013; open arrows 2008

Wheatley Traffic Flows – Observations

- London Road
 - Significant traffic Waterperry Road - Old London Road (from villages?)
 - Mini-roundabout marking unclear & dangerous (near-misses)
- Church Road
 - Queuing at London Road in the evening (East-bound)
 - Buses mount pavement to pass oncoming traffic
- Crown Square
 - Less than 20% High Street traffic continues to Crown Road (proportion continuing via Leyshon Road / Ambrose Rise not known)
 - Mulberry Drive traffic probably quite small
- Friday Lane
 - Queuing at Church Road in the evening (East-bound)
 - Lorries cut corner from High Street into Friday Lane! (safety bollards broken & not repaired)
- Ladder Hill
 - Morning traffic mainly south-bound, evening traffic mainly north-bound

Wheatley Environs – Observations

- Dominant rush-hour traffic leaving Green Road roundabout:
 - South-bound in the morning (on Eastern Bypass)
 - East-bound in the evening (on A40)
- Dominant rush-hour traffic in Wheatley:
 - South-bound in the morning (on Ladder Hill) ~600/hour
 - East-bound in the evening (via London Road) ~600/hour
 - Volumes at least 1/3 that on A40 and Eastern Bypass roads
 - at least 20% increase since 2008 on Ladder Hill & London Road
- Effect of Church Road Closure – monitored 19 & 20 Nov.
 - Marked reduction on High Street & Ladder Hill
 - Some increase on Farm Close Road (not measured)

Wheatley Environs – Future Predictions

- 885 new homes at Barton will increase traffic volumes in Wheatley.
- SODC Core Strategy adds 1154 new homes in larger villages of which Wheatley has been allocated 50
- Government likely to increase increase Core Strategy targets in early 2014

» Acknowledgements: thanks to 16 volunteers!